



SAPPHIRE REPORT

GIA REPORT 2155692689

November 12, 2013

Weight **1.11 carat**
 Measurements **5.70 x 5.26 x 3.87 mm**
 Shape..... **Octagonal**
 Cutting Style: **Step Cut**
 Transparency..... **Transparent**
 Color..... **Blue**

CONCLUSION

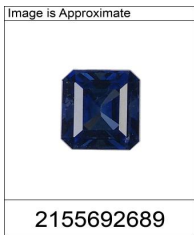
Species..... **NATURAL CORUNDUM**
 Variety..... **NATURAL SAPPHIRE**
 Geographic Origin **Not Requested**

TREATMENT

No indications of heating.

Comments:

None



This is a digital representation of the original GIA Report. To verify the information herein, please refer to reportcheck.gia.edu. This Report is not a guarantee, valuation or appraisal and contains only the characteristics of the diamond described herein after it has been graded, tested, examined and analyzed by the laboratory providing this Report ("GIA") and/or has been inscribed using the techniques and equipment used by GIA at the time of the examination and/or inscription. Inscriptions reported in this document are not a guarantee, validation, or warranty of a diamond's quality, country of origin or source; or that the diamond will be identifiable by the inscription in the future (since inscriptions can be removed). GIA makes no representation concerning any trademark, word, or symbol which is inscribed by GIA or which is identified on this Report. The recipient of this Report may wish to consult a credentialed jeweler or gemologist about the information contained herein.

For terms, conditions, and limitations, see www.gia.edu/terms or call 800-421-7250 or 760-603-4500.