



GIA®

GIA GEMOLOGICAL REPORT

SAPPHIRE REPORT

GIA REPORT 6223336419

March 21, 2022

DETAILS

Shape..... **Oval**
 Cutting Style: Crown **Modified Brilliant Cut**
 Cutting Style: Pavilion **Step Cut**
 Transparency **Transparent**
 Color..... **Blue changing to Violet**

RESULTS

Species..... **Natural Corundum**
 Variety..... **Natural Sapphire**
 Geographic Origin **Not Requested**

TREATMENT

No Indications of Heating

Item Description: One loose stone
 Weight: **3.62 carats**
 Measurements: **10.32 x 7.59 x 5.51 mm**
 Comments: This stone exhibits a change of color when viewed under daylight or fluorescent vs incandescent light.

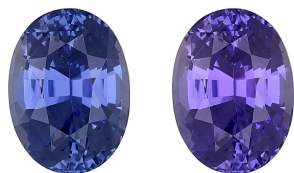


Image is approximate

FACSIMILE This is a digital representation of the original GIA Report. This representation might not be accepted in lieu of the original GIA Report in certain circumstances. The original GIA Report includes certain security features which are not reproducible on this facsimile.

reportcheck.gia.edu

The results documented in this report refer only to the article described, and were obtained using the techniques and equipment used by GIA at the time of examination. This report is not a guarantee or valuation. For additional information and important limitations and disclaimers, please see www.gia.edu/terms or call +1 800 421 7250 or +1 760 603 4500. ©2021 Gemological Institute of America, Inc.



2



THE SECURITY FEATURES IN THIS DOCUMENT, INCLUDING THE HOLOGRAM, QR CODE AND MICROPRINT LINES, IN ADDITION TO THOSE NOT LISTED, EXCEED DOCUMENT SECURITY INDUSTRY GUIDELINES.