



# GIA®

## GIA GEMOLOGICAL REPORT

### SAPPHIRE ORIGIN REPORT

GIA REPORT 2211999615

September 08, 2021

#### DETAILS

Shape..... Octagonal  
Cutting Style ..... Step Cut  
Transparency ..... Transparent  
Color..... Deep Blue

#### RESULTS

Species..... Natural Corundum  
Variety..... Sapphire  
Geographic Origin ..... Sri Lanka

#### TREATMENT (Scan QR code for more information)

Heated

Item Description: One loose stone

Weight: 4.05 carats

Measurements: 8.21 x 7.92 x 6.39 mm

Comments: The color appearance of this stone is described in the trade as "Royal Blue".

Any statement on geographic origin is an expert opinion based on a collection of observations and analytical data.

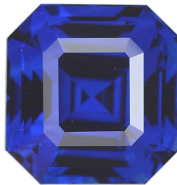


Image is approximate

**FACSIMILE** This is a digital representation of the original GIA Report. This representation might not be accepted in lieu of the original GIA Report in certain circumstances. The original GIA Report includes certain security features which are not reproducible on this facsimile.

To learn more about how GIA determines and classifies gemstone origin, as well as maps describing localities, go to [reportcheck.gia.edu](https://reportcheck.gia.edu) to view this report.

[reportcheck.gia.edu](https://reportcheck.gia.edu)

The results documented in this report refer only to the article described, and were obtained using the techniques and equipment used by GIA at the time of examination. This report is not a guarantee or valuation. For additional information and important limitations and disclaimers, please see [www.gia.edu/terms](https://www.gia.edu/terms) or call +1 800 421 7250 or +1 760 603 4500. ©2021 Gemological Institute of America, Inc.



THE SECURITY FEATURES IN THIS DOCUMENT, INCLUDING THE HOLOGRAM, QR CODE AND MICROPRINT LINES, IN ADDITION TO THOSE NOT LISTED, EXCEED DOCUMENT SECURITY INDUSTRY GUIDELINES.